



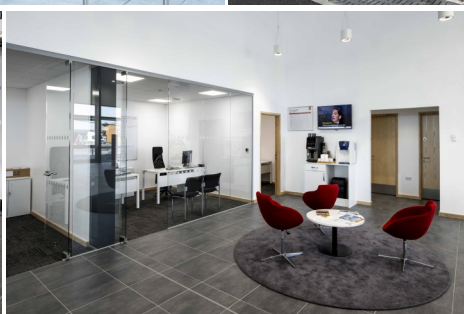
New Build

Scheme Details

Project Value: £3m

Programme: 30 weeks

This new build showroom on the 'Saltbox' development in Bognor Regis, was a brand new dealership project for RMG. The works included the build of the showroom, a workshop, valet bays, vehicle storage, 226 vehicle display bays, steel frame, cladding & roofing, glazing and all M&E works, internal fit-out and all aspects of landscaping.



Innovative Construction Solutions, **making complex simple**

mcs group Ltd, Haywood Road, Warwick, CV34 5AH

T: 01926 842500 E: info@mcs-ltd.com W: www-mcs-ltd.com